

FOWLER'S
MECHANICAL ENGINEER'S
POCKET BOOK
1915.

i.

Sole. No. 2710 Avenue

Telegrams "BULLIVANT'S LONDON"

BULLIVANT'S

Wire Ropes for
Lifts Hoists
& all purposes

Flexible
Durable
Reliable

TESTED
TO 15 TONS

Bullivant & Co. L^{td} 72 MARK L^{ane} LONDON, E.C.

ii.

FOWLER'S PATENT

Pocket Calculator

The Cheapest and Most Perfect Calculating
Instrument on the market.

x

Invaluable
to
Engineers,
Draughts-
men,
and all
who have
Calculations
to make.

SOLVES

MULTIPLICATION AND
DIVISION. FRACTIONS,
SQUARES & SQUARE
ROOTS.

CUBES & CUBE ROOTS.

MISCELLANEOUS
ROOTS AND POWERS.
LOGARITHMS.

AREAS OF CIRCLES.

SINES, COSINES AND
TANGENTS OF ANGLES,
&c., &c.

x

Price

7/9

Post Free
United
Kingdom

9/=

Post Free
anywhere
Abroad.

x

Descriptive Circular, Post Free,

FOWLER & CO.,

53, New Bailey Street, Manchester, England.

FORTIETH YEAR OF PUBLICATION.

CALVERT'S Mechanics' Almanack

And WORKSHOP COMPANION for 1915.

EDITED BY

FRANK NASMITH, Editor Textile Recorder,
And JOHN NASMITH, A.M.I.MECH.E.

CONTAINING

Practical, Technical and industrial knowledge for
those engaged in the Mechanical, Electrical, and
Gas Engineering Trades.

PROFUSELY ILLUSTRATED.

Each Annual different from its predecessors.

Crown 8vo. 70pp.

Price 4d.

A Selection from JOHN HEYWOOD'S PUBLICATIONS.

Cotton Spinning Calculations. By THOMAS THORNEY. Fourth Edition. Revised and greatly enlarged. 4s. net.

Key to Ditto. For Practical Spinners, Teachers and Students, who desire to study calculations as fully as possible, and to obtain a complete knowledge of spinning, this book is indispensable. New and enlarged edition. 4s. net.

Nasmith's Student's Cotton Spinning. Revised and enlarged, 636 pp. By JOSEPH NASMITH. Examiner in Cotton Spinning for the City and Guilds of London Institute, &c. Third edition. 6s. net.

Practical Treatise upon Self-Acting Mules. By THOMAS THORNEY. 6s. 6d. net. Fourth Edition. Revised and greatly enlarged.

"The Standard Text Book."—MANCHESTER COURIER.

"The most valuable characteristic of the author is a thoroughly intimate practical knowledge of his subject."—MANCHESTER GUARDIAN.

Practical Treatise on Mule Spinning. By THOMAS THORNEY. 656pp 6s. 6d. net. A Continuation of "Self-Acting Mules."

Practical Pattern Making and Moulding. For the use of Students, Artisans, and Engineers. By W. H. WILSON. Demy 8vo. Price 7s. 6d. net.

CATALOGUES OF TECHNICAL BOOKS FREE ON APPLICATION.

Post Orders promptly attended to. Largest stock in the Kingdom.

JOHN HEYWOOD LTD., Deansgate & Ridgefield,
Manchester;

20-22, St. Bride Street, London, E.C.

The Principles & Practice of Ironfounding.

By E. L. RHEAD, F.I.C., F.C.S., etc.,

Lecturer in Metallurgy, Municipal School of Technology, Manchester.

CONTAINS CHAPTERS ON

Iron and Steel in the Foundry—Testing Cast Iron—Moulding Materials in the Foundry—Sand Mixing Appliances in the Foundry—Foundry Blackings and Partings—Moulding Tools and Appliances—Foundry Moulds and their Production—Moulding Operations—Cores and Core Making—Loam Moulding—Plate and Machine Moulding—Chill Castings—Malleable Castings—Melting Iron for Foundry Purposes—Blast for Cupolas—Air Furnaces—Useful Data.

PRESS OPINIONS.

"The book is direct and informative, without waste of words. The average moulder, and indeed every one connected with foundry work, will find this book among his most useful possessions."—*American Machinist*.

"This book represents quite modern foundry practice and science. Taking the book throughout attention has been mainly directed to the causes underlying many of the troubles encountered in practical work, with the conditions that must be fulfilled in order to avoid them, and with the precautions necessary to secure the best results."—*Iron and Coal Trades' Review*.

"Throughout the book the attempt has been made to refer things back to underlying principles, to point out causes as well as effects, and thus to lay in the reader's mind the basis for an intelligent comprehension of iron founding."—*Engineering News*.

"The work is thoroughly practical in its nature; the explanations are simply and clearly given, and the diagrams and illustrations are well designed to aid the fullest comprehension of the text."—*Newcastle Chronicle*.

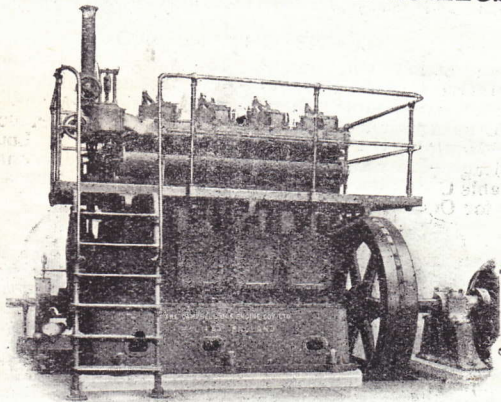
Over 500 pages and 247 illustrations.

Price 7/11, post free.

THE SCIENTIFIC PUBLISHING CO.,
53, New Bailey Street, MANCHESTER, England.

See also pages xi., xvii., xix., xxxiii., xxxix., xli., xliii., xvii., li., lix., lxi., 222r, 266r, 294r, 316r, 332r., 354r, 416r, 458r, 482r, 496r, 546r, 558r.

"CAMPBELL"
Gas Engines and
Suction Gas Plants.



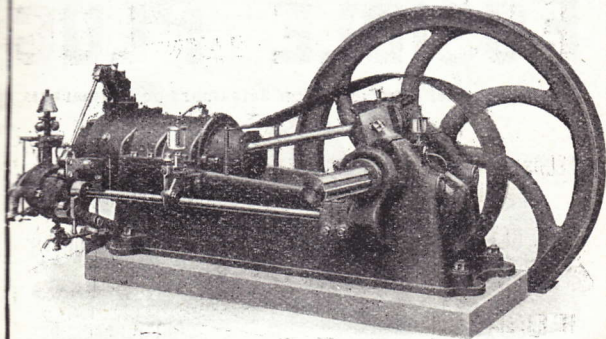
HORIZONTAL AND VERTICAL ENGINES,
 Single or Multi Cylinder, 3 to 625 B.H.P.
FOR PRODUCER OR TOWN'S GAS.

SUCTION GAS PRODUCERS

To gasify Anthracite, Coke, Charcoal, poor Anthracite, Bituminous Coal, Peat, Lignite, Collie Coal, Wood Refuse, Rice Husks, Cotton Seed, Olive Husks, &c.

The CAMPBELL GAS ENGINE CO^{LD}
HALIFAX, England.

"CAMPBELL"
High Compression
Crude-Oil Engines.



Run on all Kinds of Crude or Residual
Petroleum or on Tar Oil.
Consumption '45 to '65 lb. per B.H.P. Hour.
WILL START AND RUN WITHOUT HEATING LAMP.
WATER INJECTION TO CYLINDER IS NOT USED.

Standard Sizes 7 to 400 B.H.P.

We also Build Vertical Oil Engines, Stationary
and Marine Types, for Crude and Refined Oil.

The CAMPBELL GAS ENGINE CO^{LD}
HALIFAX, England.

vii.

All Steam Boilers

SHOULD BE FITTED WITH A GOOD FUSIBLE PLUG.

THE "NATIONAL"

PATENT

FUSIBLE PLUG

Is the most Reliable Low-Water Safe Guard on the market.

PLUGS SUITABLE

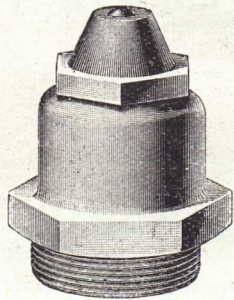
FOR

ALL GLASSES

OF

INTERNALLY-FIRED

BOILERS.



SPECIAL PLUGS

CONSTRUCTED

FOR

HIGH PRESSURES.

Improved Valve-Seated Plug.

SCREWED 1in., 1½in., 1¾in., & 2in. GAS THREAD ON THE SEATING.

Illustrated Price List on application.

See List of **BOILER FITTINGS** and Articles useful to **STEAM USERS** and **ENGINEERS.**

NATIONAL BOILER

AND GENERAL INSURANCE CO. LTD.,

National Buildings,
St. Mary's Parsonage, **MANCHESTER.**

London Office: 60, QUEEN VICTORIA STREET, E.C.

FOWLER'S

Mechanical Engineer's

POCKET BOOK,

1915.

EDITED BY

WILLIAM H. FOWLER,

Wh.Sc., M.Inst.C.E., M.I.Mech.E., M. Iron & Steel Inst.

SEVENTEENTH ANNUAL EDITION.

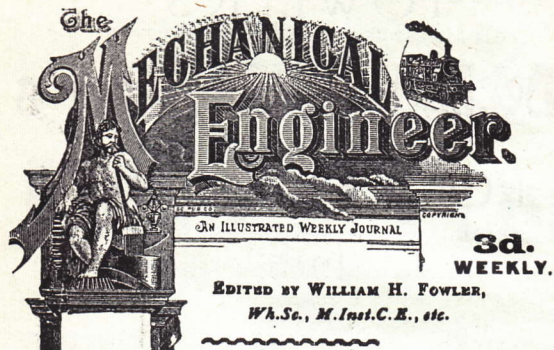
Cloth, Price 1/6 net ; Post free, 1/9.

Superior Binding. Gilt Edges, Price 2/6 ; Post free, 2/9.

SCIENTIFIC PUBLISHING CO.,

MANCHESTER.

[All Rights Reserved.]



3d.
WEEKLY.

A Practical Journal for Practical Men.

*Should be in the hands of all Engineers, Works Managers
Students, &c.*

SEND FOR SAMPLE COPY POST FREE.
Annual Subscriptions.

UNITED KINGDOM: 12/6 post free.

ANYWHERE ABROAD: Thick Paper Edition, 21/- post free.

Thin " " 17/6

Foreign Remittances by International Money Order only.

GRATIS. Fowler's Mechanical Engineer's
Pocket Book.

To all direct Annual Subscribers to the Journal a copy of
this Pocket Book will be sent POST FREE.

THE SCIENTIFIC PUBLISHING CO.,
53, New Bailey Street,
MANCHESTER, England.

LIST OF ADVERTISERS.

	PAGE.
Bridge and Co., Ltd., D., Castleton, Manchester	xxvii.
Bullivant and Co., Ltd., London	i.
Campbell Gas Engine Co., Ltd., Halifax	v., vi.
Clarke, Chapman, and Co., Ltd., Gateshead-on-Tyne	xy.
Deightons Patent Flue & Tube Co., Ltd., Leeds	xxv.
Delta Metal Co., Ltd., London	Back Cover
Drum Engineering Co., Bradford, Yorks.	xix.
Fowler and Co., Manchester	ii., lxiii., lxiv.
Gardner and Sons, Ltd, L., Patricroft, Manchester	xxxv.
Green and Son, Ltd., E., Wakefield	xxix.
Harlow and Son, R., Stockport	xxxii.
Heywood, Ltd., John, Manchester	iii.
'Mechanical Engineer' Manchester	ix.
National Boiler and General Insurance Co., Ltd., Manchester	vii.
Oldham Boiler Works Co., Ltd., Oldham	xxi.
Proctor, Ltd., James, Burnley	xxxiii.
Schäffer and Budenberg, Ltd., Manchester	lxvi.
Scientific Publishing Co., Manchester	iv., ix.
Thompson, John, Wolverhampton	104B.
United Flexible Metallic Tubing Co., Ltd., London	liii.
United States Metallic Packing Co., Ltd., Bradford, Yorks.	lxv.
Winn and Co., Charles, Birmingham	xlix.

For Buyers' Directory see pages xii., xliii., xlv.

ALLOYS (Non-Ferrous).

By A. HUMBOLDT SEXTON,
F.I.C., F.C.S., &c.

Contents.

Introductory—Properties of Alloys as Related to those of their Constituents—The Phenomena of Solidification—What the Microscope can Teach—Changes in the Structure of Alloys in the Solid Condition—Metals Used in the Preparation of Alloys—The Brasses—The Copper-tin Series—Machinery Brasses and Bronzes—Bearing Metals and other Copper Alloys—White Alloys—White Anti-friction Alloys—Light Alloys and Fusible Alloys—Nickel Alloys—Alloys of the Precious Metals—Preparation of Alloys.

Price 7/10, post free.

THE COMMON METALS (Non-Ferrous).

The Metallurgy of Copper, Tin, Zinc, Lead, Antimony, Aluminium & Nickel.

By A. HUMBOLDT SEXTON, F.I.C., F.C.S., and JOHN S. G. PRIMROSE, A.G.T.C., A.I.M.M., M.I.M.

Contents.

Properties of Copper—Copper Minerals and Ores—Copper Smelting—Ore Dressing—Roasting Furnaces—Copper Refining—Electro Deposition of Copper—Electrolytic Refining—Electric Smelting of Copper Ores—Properties of Tin—Working Alluvial Deposits—Tin Smelting in Reverberatory and Blast Furnaces—Refining Tin—Wet and Electrolytic Processes—Properties of Zinc—Dressing Zinc Ores—Calcination and Roasting of Zinc Ores—Processes Blast Furnace Smelting—Refining Zinc—Wet and Electrolytic Methods of Treating Zinc Ores—Properties of Lead—Preparation of Lead Ores—Lead Smelting in Reverberatory Furnaces—Processes—Smelting in Hearths—Roasting Lead Ores—Blast Furnace Smelting—Wet and Electrolytic Processes—Softening and Refining Lead—Properties of Antimony—Smelting Antimony Ores—Properties and Uses of Aluminium—Processes for the Preparation of Aluminium—Properties of Nickel—Dry Methods for the Extraction of Nickel—Wet and Electrolytic Methods—Physical Constants of Metals—Thermo-Chemical Data—Factors in Calculating Blast-Furnace Charges—Bibliography.

Price 7/11, Post Free.

THE SCIENTIFIC PUBLISHING CO.,
53, New Bailey St., MANCHESTER, England.

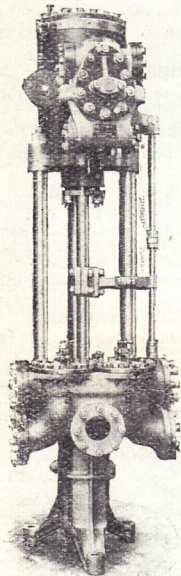
BUYERS' DIRECTORY.

Air Compressors.		Consulting Engineers.
Campbell Gas Engine Co. Ld. vi.		National Boiler Insurance Co. vii.
Alloys (see Metals).		Couplings.
Anti-Friction Metals.		Bridge and Co., Ltd., D. xxvii.
Delta Metal Co. Ltd. Back Cover		Cranes (see Hoists).
Boiler Insurance.		Dynamos and Motors.
National Boiler Insurance Co. Ltd. vii.		Clarke, Chapman & Co. Ltd. xv.
Boiler Fittings.		Economisers.
Harlow and Son, R. xxxi.		Green and Son Ltd., E. xxix
National Boiler Insurance Co. vii.		Electrical Plant.
Schäffer and Budenberg Ltd. lxvi.		Clarke, Chapman & Co. Ltd. xv.
Boiler Setting.		Electrical Machinery, Insurance of.
Thompson, John 104B		National Boiler Insurance Co. Ltd. vii.
Boilers.		Elevators & Conveyors.
Clarke, Chapman, and Co., Ltd. xv.		Proctor Ltd., James xxxiii.
Deighton's Patent Flue and Tube Co. Ltd. xxv.		Engine Fittings.
Oldham Boiler Works Co. Ltd. xxi.		Harlow and Son, R. xxxi.
Thompson, John 104B		Schäffer & Budenberg Ltd. lxvi.
Books, Technical.		Engines, Insurance of.
Heywood Ltd., J. iii.		National Boiler Insurance Co. Ltd. vii.
Scientific Publishing Co. iv.		Engines.
Brass Founders.		(See Steam, Gas, and Oil.)
Harlow and Son, R. xxxi.		Feed-water Heaters.
Capstans & Windlasses.		Clarke, Chapman & Co. Ltd. xv.
Clarke, Chapman, & Co. Ltd. xv.		Green and Sons Ltd., E. xxix.
Calculators, Pocket.		Friction Clutches.
Fowler and Co. ii.		Bridge and Co., Ltd., D. xxvii.
Chimneys.		Furnaces.
Thompson, John, Wolverhampton 104B		Deighton Patent Flue and Tube Co. Ltd. xxv.
Condensers.		Proctor Ltd., James xxxiii.
Clarke, Chapman & Co. Ltd. xv.		

For List of Advertisers see page x.

CLARKE, CHAPMAN & CO.

xv.
LIMITED,
GATESHEAD-ON-TYNE.



Independent Direct Acting Slow Speed Feed Pump.

(WOODESON PATENTS.)

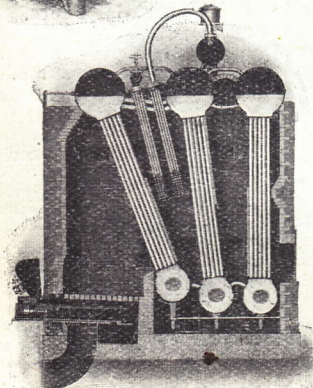
Manufactured on the Simple, Tandem,
 Compound and Twin Compound Systems.

Duplex Feed and Ballast Pumps.

Electric Light Machinery.
Dynamos and Motors
Steam and Electric Cranes.
High-Speed Engines.
Winding Engines.

**WINCHES, CAPSTANS,
 WINDLASSES.**

BOILERS OF ALL TYPES, HORIZONTAL AND VERTICAL.



WATER TUBE BOILERS

(Woodeson Patents)

A Speciality.

All Tubes Straight &
 nearly Vertical.

All Tubes same
 length.

Easy access to all
 parts.

Maximum steam
 release.

No Joints exposed to
 heat.

Telegraphic Address :
 "CYCLOPS," Gateshead.

LONDON,
 GLASGOW,
 and SHEFFIELD.

"WOODESON" PATENT WATER TUBE BOILER
 Fitted with Patent Superheater and Underfeed Type
 of Stoker.

INDEX.

A	PAGE
Accumulators, Steam	286
Acetylene, Flame Temperature	195
Acetylene, Heating Value	195
Acetylene, Lighting	101
Acetylene, Manufacture of	101
Acidity of Oils	476
Acme Screw Threads	88
Adhesion of Locomotives	296
Admiralty Gun Metal	83, 108
Admiralty Practice, Steam Pipes	163
Admiralty Tests, Marine Boilers	139
Admiralty Tests, Water-tube	142, 145
Adriatic, ss., Dimensions	76
Air Blowers, Capacity of	201
Air Blowers for Gas Producers	201
Air Blowers, Steam Used	201
Air and Coal Gas, Specific Heat	186
Air, Coefficient of Expansion	186
Air, Composition of, by Weight	565
Air, Composition of, by Volume	287
Air, Compressors, Turbo	586
Air for Ventilation, Quantity	210
Air Leakage into Boiler Flues	446
Air Lift Pumps	258
Air Pump, Proportions of	258
Air Pumps for Engines	258, 444
Air Required for Combustion	187
Air Required for Combustion of Town's Refuse	221
Air, Specific Heat	186
Air Supply to Boiler Furnaces	211
Air Vibration of Gas Engines	378
Air, Weight of Cubic Foot	186
Air, Weight and Density	3, 186
Alcohol, Heating Value	195
Alcohol, Flame Temperature	195
Allis Engine, Steam Consump- tion	242
Alloy Steels	512
Alloys, Composition of	83
Alloys, Strength	108, 538
Alternate Side Firing	206
Aluminium Alloys	521
Aluminium, Atomic Con- stants	559, 560
A	PAGE
Aluminium Bronze	521, 538
Aluminium, Effect of Tem- perature on Strength	520
Aluminium, Effect on Pig Iron	498
Aluminium, Effect on Steel	510, 518
Aluminium, Expansion of	78
Aluminium, Machining of	520
Aluminium, Melting Point	78
Aluminium, Shrinkage	520
Aluminium, Soldering	521
Aluminium, Specific Gravity	78, 520
Aluminium, Specific Heat	78
Aluminium, Strength	521
Aluminium, Tenacity	521
Aluminium, Weight	60, 489
Aluminium, Weight of Cubic Foot	78
Aluminium Wire, Weight	59
American Gallon	1
American Gauge for Sheet and Plate Iron and Steel	69
American Pipes, Briggs Stan- dard	96
American Ton	2
American Wire Gauge	70
Ampere, Definitions	12
Analysis of Bituminous Coals Analysis of Blast Furnace Gas	194 202
Analysis of Charcoal	197
Analysis of Coal Gas	199
Analysis of Coke Gas	197
Analysis of Coke, Hard	197
Analysis of Coke, Soft	197
Analysis of Mild Steels	506
Analysis of Mond Producer Gas	204
Analysis of Natural Gas	199
Analysis, Oil Gas	204
Analysis, Peat Gas	204
Analysis of Petroleum Oils	198
Analysis of Producer Gas	201, 208
Analysis of Water Gas	202
Analysis of Wood Fuel	198
Angles, Blade, Steam Tur- bines	274
Angles, Sines, Cosines, &c.	56
Annealing Chains	493

For Buyers' Directory see pages xii., xiii., xiv.

GAS AND OIL ENGINES.

A Treatise on the Design, Construction, and Working of Internal-combustion Engines, operated by gas from town's mains, blast furnaces, pressure and suction producers as well as by oil and petrol.

By HORACE ALLEN.

Contents.

Details of Gas Engines generally considered—Application of the Working Charge to Internal-combustion Engines—Regulation of Gas Engines—Ignition of the Charge in Internal-combustion Engines—Governing the Power Developed by Internal-combustion Engines—Actuation and Development of Cams for Lifting Valves—Cyclic Irregularity of Gas Engines—Construction of Gas Engine Flywheels—General Description of Gas Engines by Various Makers—Gas Engines of the Vertical Type—Two-cycle Internal-combustion Engines—Scavenging and Compounding Gas Engines and other recent Improvements—Internal-combustion Engines as designed to use Oil Fuel—Internal-combustion Engines for Marine Purposes—Carburetters for Vaporising Petrol and Petroleum—Electric Ignition Applied to Petrol and Petroleum Motors—Petrol Motors—Petrol Motors Applied to Road Vehicles—Silencing the Exhaust from Internal-combustion Engines—Starting Internal-combustion Engines—Pressure-gas Producers—Suction-gas Producers—Cost of Power—Indicator and its Application to Internal-combustion Engines—Development of Power by the Combustion of Gas in the Working Cylinder—Blast-furnace Gas—Lubrication—Development of Power by the Utilisation of Gas in the Exhaust—Testing.

Press Opinions.

"Altogether the book is a valuable one, containing a great deal of information as to recent researches, recent engines, and recent practice in this field generally. Altogether the author has produced a very useful work, which I, for one, shall add to my scientific library."—Mr. Dugald Clerk, M.Inst.C.E., in *Electrical Engineering*.

"Mr. Allen has written a well-illustrated book, which shows that its author has acquired a wide knowledge of the practical side of designing, manufacturing, and working of gas and oil engines. As a work of reference, the book will fill a distinctly useful purpose."—*Times Engineering Supplement*.

"A practical sound work on the subject."—*The Electrical Review*.

Price **12/11**, post free.

The Scientific Publishing Co.,

53, NEW BAILEY STREET,

MANCHESTER, England.

	PAGE
Anthracite Coal	196
Antilogarithms	45
Antimony, Atomic Weight ..	559
Antimony, Melting Point ..	78
Antimony, Specific Gravity ..	78
Antimony, Specific Heat ..	78
Antimony, Weight	78, 489
Anti-vacuum Pipe	151
Anti-radium Valves	303
Aquitania, ss., Dimensions..	76
Area and Circumference of Circles	21, 27
Area, British and Metrical Equivalents	1
Area, Chimneys	215
Area, Circles	21
Area, Cone	20
Area, Cycloid	20
Area, Cylinder	20
Area, Ellipse	22
Area, Hyperbola	19
Area, Irregular Plane Surface	18
Area, Parabola	18
Area, Parallelogram	20
Area, Prism	17
Area, Quadrilateral	21
Area, Sphere	17
Area, Trapezoid	17
Area, Triangle	17
Areas, Passage, Steam Tur- bines	273
Areas, Planes and Solids ..	17
Areas, Small Circles	23
Areas, Steam Pipe and Port ..	244
Argon, Atomic Weight	560
Arsenic, Atomic Weight	559
Arsenic in Copper	107
Arsenic, Effect on Steel	510
Arsenic, Specific Heat	559
Ash, Comparative Stiffness ..	80
Ash in Coal, Composition ..	205
Ash, Modulus of Elasticity ..	80
Ash, Special Properties	80
Ash, Tensile Strength	80
Ash, Weight of Cubic Foot ..	80
Asphalt, Closed	217
Aspinall Governor	253
Atlantic Liners, Dimensions..	76
Atmosphere, Carbonic Acid in	565
Atmosphere, Composition ..	565
Atmospheric Standards	1
Atomic Weight of Elements, 188, 559, 560	
Austin, Heat Transmission ..	124
Axle-boxes, Locomotives	303

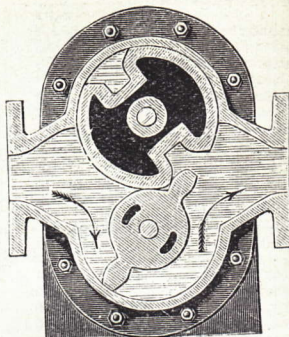
	PAGE
B	
Back Pressure in Engines	224
Balancing of Locomotives	298
Balancing of Turbine Rotors ..	276
Baler Pumps	427
Ball Bearings, Angular	473
Ball Bearings, Journal	473
Ball Bearings, Lubrication ..	472
Ball Bearings, Mounting	472
Ball Bearings, Crushing Load	471
Ball Bearings, Friction of	473
Ball Bearings, Pressures on ..	472
Ball Bearings, Thrust	472
Ball Bearings, Working Load ..	472
Balls, Metal, Weight	64
Banki Oil Engine	408, 411
Barium, Atomic Weight	559
Barium, Specific Heat	559
Basic Bessemer Steel	511
Basic Open Hearth Steel	511
Basic Pig Iron	499
Beam Engine, Economy	242
Beam Engines, Design	224
Beams, Deflection of	539, 545
Beams, Relative Strengths Ac- cording to Support	539
Beams, Strength	540
Beardmore's Gas Engine	382
Bearing Metals, Composition ..	83
Bearing Pressures, High-speed Engines	235
Bearings, Ball	471
Bearings, Limiting Pressure ..	477
Bearings of Locomotives	303
Bearings Roller, Efficiency ..	474
Bearings Roller, Friction	474
Bearings, Roller, Pressure on ..	474
Bearings for Shafts, Pitch of ..	470
Bearings for Turbines	276
Bearings, Wear on	237
Beau de Rochas Cycle	355
Beech, Comparative Stiffness ..	80
Beech, Crushing Strength	80
Beech, Modulus of Elasticity ..	80
Beech, Tensile Strength	80
Beech, Weight of, Cubic Foot ..	80
Bell Metal, Composition	83
Bellis and Morcom Engine	281
Belts, Centrifugal Force of ..	464
Belts, Joints, Strength	467
Belts, Link	465
Belts, Material	464
Belts, Power of	464
Belts, Pulleys, Convexity of ..	465
Belts, Pulleys, Speed	466
Belts, Slip, Speed of	465

For Buyers' Directory see pages xii, xiii, xiv.

Telegrams:
 "DRUM, BRADFORD."
 Telephone 2358.

JOHNSON'S

DRUM PUMP



Positive Action. High Efficiency. No Valves.

Used for Water and all kinds of Semi-fluids by
 Leading Manufacturers in many Trades.

Arranged with fast and loose pulleys, also for hand power. Can be
 coupled direct to Steam, Oil, and Gas Engines, or to Electric Motors.
 Stock sizes, with fast and loose pulleys, 650 to 24,000 gallons per hour.

WRITE FOR CATALOGUE No. 92 TO—

DRUM ENGINEERING CO., ³³ BROOK STREET, BRADFORD.

THE PRACTICAL METALLOGRAPHY OF IRON AND STEEL.

By **JOHN S. G. PRIMROSE**, A.R.T.C., A.I.M.E., M.I.M.

Lecturer on Metallurgy, and demonstrator on Metallography at
 the Royal Technical College, Glasgow.

Price 3s. 3d. Post Free.

Every Iron and Steel Works should be provided with a metallographic laboratory with a suitable equipment in which, by Scientific methods, the daily working may be controlled and improved, and that this may be efficient, every worker should be familiar with the principles on which the researches are based. This book has been prepared for the use of those who are commencing the study of metallography. The work is a thoroughly practical one, theoretical considerations being made as brief as possible. The contents comprise exhaustive chapters on Microstructure of Iron and Steel; Constitution of Iron and Steel; Heat Treatment of Iron and Steel; Micrographic Examination of Failures; Metallographic Apparatus and its Manipulation.

THE SCIENTIFIC PUBLISHING COMPANY,
 53, New Bailey Street, Manchester.

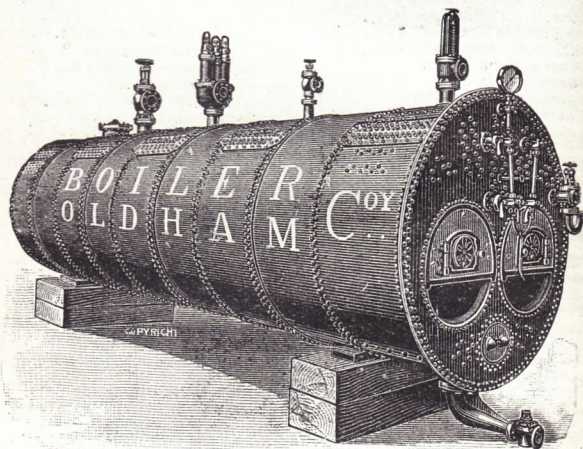
	PAGE	PAGE	
Balls, Strength of	464	B. of Trade, Steel Boiler Plates 109	
Balls, Thickness of	464	Board of Trade, Steel Forgings 110	
Balls, Width of	464	Board of Trade, Steel Stay Bars 109	
Balls, Working Tension	461, 465	B. Trade, Test of Safety Valves 154	
Bending Tests for Boiler Plates 111		Board of Trade, Turbine Shafts 247	
Berry Formula for Weight of		Board of Trade Unit	14
Metal Spheres	64	B. of Trade, Vertical Furnaces 118	
Bessemer Pig Iron	499	Boilermakers' Rules for Man-	
Bessemer Steel	510, 587	holes	118
Bevel Gears	469	Boilers, Anti-priming Pipe	151
Birmingham Wire Gauge	70	Boilers, B. of Trade Rules	108
Bismuth, Atomic Weight	559	Boilers, Bone-Court	191
Bismuth, Expansion	78	Boilers, Cast-iron for	105
Bismuth, Melting Point	78	Boilers, Cast-steel for	106
Bismuth, Specific Gravity	78	Boilers, Causes of Bad Efficiency 210	
Bismuth, Specific Heat	78, 559	Boilers, Chimney Area	215
Bismuth, Weight	78, 485	Boilers, Chimney Draught	216
Bituminous Coals, Analysis	194	Boilers, Chimney, Height	215
Blade Angles, Turbines	274	Boilers, Circulation in	143
Blade Stripping, Turbines	288	Boilers, Compressive Stress on	
Blades for Turbines	272	Tube Plates	114
Blast Furnace Gas	202, 204, 395	Boilers, Copper Plates, 107, 297, 531	
Blisters Steel, Manufacture of	506	Boilers, Cornish Multitubular 184	
Blowers v. Fans	218	Boilers, Cornish Type	126
Blowers, Efficiency of	201	Boilers, Corrosion Causes	144
Blowers for Gas Producers	201	Boilers, Coverings	165
Blowers, Kirtling's, Capacity of 201		Boilers, Cross-water Pipes,	
Blowers, Ratio of Air to Steam 201		Effect of	127
Blowers, Thwaite's, Capacity of 201		Boilers, Dampers	219
Blow-out Taps	157	Boilers, Dished Ends	114
Board of Trade, Butt Straps	111	Boilers, Domestic Hot Water	145
Board of Trade, Crank Shafts	246	Boilers, Dryback Multitubular 134	
Board of Trade, Dished Ends	114	Boilers, Economiser Construc. 174	
Board of Trade, Electrical		Boilers, Economiser Surface	176
Units	11	Boilers, Economiser, Sweating 175	
Board of Trade, Evaporators	173	Boilers, Economiser, Size of	175
Board of Trade, Feed Heaters 173		Boilers, Efficiency	181
Board of Trade, Flanged Seams 112		Boilers, Efficiency Combustion 210	
Board of Trade, Flat Surfaces	115	Boilers, Efficent	140
Board of Trade, Fox's Furnaces 113		Boilers, Evaporative Tests	181
Board of Trade, Hemispherical		Boilers, Externally-fired	141
Boiler Ends	114	Boilers, Fairbairn's Rule	111
B. of Trade, Hydraulic Tests	183	Boilers, Feed Pumps	448
Board of Trade, Rivets	113	Boilers, Feed-water	176
B. Trade, Morrison's Furnaces 112		Boilers, Feed-water	205
B. Trade, Plain Iron Furnaces 112		Boilers, Firing	149
B. Trade, Plain Steel Furnaces 112		Boilers, Fittings	154
B. of Trade, Purves' Furnaces 113		Boilers, Flat Surfaces	115
Board of Trade, Springs	153	Boilers, Flues and Seatings	184
Board of Trade, Girders	114	Boilers, Forced Draught	216
Board of Trade, Crushing		Boilers, Fox's Furnace Tubes	113
Stress in Furnaces	112	Boilers, Fuels	193, 205
B. of Trade, Deighton Furnaces 113		Boilers, Furnace Tubes	111
B. of Trade, Safety Valve Gear 147		Boilers, Furnaces for Oil	212
B. Trade, Safety Valve Springs 153		Boilers, Fusible Plugs	160
B. of Trade, Size Safety Valves	153	Boilers, Galloway, Circulation 127	
Board of Trade, Steam Pipes	162	Boilers, Girders for	114
		Boilers, Grease in	123, 177

For Buyers' Directory see pages xii, xiii, xiv.

The Oldham Boiler Works Co. Limited,

OLDHAM.

ESTABLISHED 1816.



For **200** lbs. Per Square
Inch.



A Speciality.

	PAGE		PAGE
Boilers, Hardness of Water ..	177	Boilers, Salinometer, Use of ..	157
Boilers, Heating	574	Boilers, Retarders	121
Boilers, Heating Surface	120	Boilers, Scale, Effect of	123
Boilers, Heating Surfaces, Effect of Gas and Water Films,	124	Boilers, Serve Tubes Efficiency	121
Boilers, Heat Transmission through Plates	122	Boilers, Soot, Effect of	123
Boilers, Hemispherical Ends ..	114	Boilers, Stay Bars	109, 115
Boilers, Horse Power of Cornish	128	Boilers, Steam Pipes	162
Boilers, Horse Power of Lancs.	128	Boilers, Steam Pipes, Copper ..	163
Boilers, Horse Power of Thompson	130	Boilers, Steam Pipes, Radiator	165
Boilers, Hydraulic Tests	183	Boilers, Steam Pipes, Strength	162
Boilers, Induced Draught	218	Boilers, Steel Plates ..106, 109, 526	
Boilers, Lancashire, Circula- tion	127	Boilers, Steel Plates Working	109
Boilers, Lancs. Multitubular ..	134	Boilers, Stokehold Pressure ..	216
Boilers, Lancashire Three flued	133	Boilers, Strength of Iron Plates	105
Boilers, Lancashire Type	127	Boilers, Surface Combustion ..	190
Boilers, Leakage of Air into Flues	210	Boilers, Thompson	127
Boilers, Limiting Crushing Stress for Furnace Tubes ..	112	Boilers, Thornycroft Type	143
Boilers, Locomotive ..135, 196, 304		Boilers, Tubes, Holding Power	119
Boilers, Locomotive Blast	135	Boilers, Vertical	136
Boilers, Loco. Proportions. 135, 296		Boilers, Water-tube	141
Boilers, Longridge's Rule	112	Boilers, Water-tube, Admiralty Tests	142, 145
Boilers, Manhole Outpieces and Strengthening Rings ..	117	Boilers, Water-tube Economiser	176
Boilers, Marine, Admiralty Tests	139	Boiling Point of Mineral Oils.	410
Boilers, Marine, British Stan- dard Screwing, for Stays ..	117	Bollixck Engine	265
Boilers, Marine Multitubular ..	138	Bolts and Nuts, British Stan- dard	92, 93
Boilers, Material	105, 108	Bolts and Nuts, Sellers	87
Boilers, Mechanical Stokers ..	208	Bolts and Nuts, Whitworth ..	84
Boilers, Morrison's Furnace ..	113	Bolt's Strength and Pitch for Cylinder Covers, etc.	117
Boilers, Multitubular	134, 138	Bolts, Whitworth, Safe Loads ..	85
Boilers, Nickel Steel for	106	Bone-Court Boiler	191
Boiler, Nicolson, High-speed ..	125	Borehole Plunger Pumps	445
Boilers of Atlantic Liners	76	Boron, Atomic Weight	559
Boilers, Oil Fuel for	212	Boron, Specific Heat	559
Boilers, Openings in Shells ..	114	Brake Horse Power, Gas Engines	363
Boilers, Plain Egg-ended	140	Brass, Expansion	78
Boilers, Plate Bending Tests ..	111	Brass, Melting Point	78
Boiler Plates, Effect of Soot, Grease, and Scale on	123	Brass, Specific Gravity	78
Boilers, Purves' Furnaces	113	Brass, Specific Heat	78
Boilers, Rate of Combustion 144, 214		Brass, Strength	108, 538
Boilers, Riveted Joints	111	Brass, Weight	60, 78, 489
Boilers, Rivets	109	Brass, Wire and Sheet, Compo- sition	83
Boilers, Safety Valves	152	Brasses, Composition of	83, 107
Boilers, Safety Valves, Board of Trade	153	Brazing Metal, Composition ..	83
Boilers, Safety Valves, Types ..	152	Bricks, Crushing Strength	82

For Buyers' Directory see pages xii., xiii., xiv.

Second Edition.

PRACTICAL PATTERN MAKING

A Treatise for Pattern Makers, Foundrymen,
Apprentices, and others.

By HERBERT AUGHTIE, A.M.I.Mech.E.

CONTENTS.

Moulding in Green Sand—Contraction—Taper—Details of Construction—Machining Allowances—Filleting—Rapping and Lifting Plates—Cores and Core Prints—Dowels—Loose Pieces—Pocket Prints—Horizontal Circular Cores—Patterns Built in Segments—Turning Tools—Templates and Chucks—Open Joints—Pipe Patterns—Fluted Columns—Skeleton Patterns—Setting Out—Provision for Mould Joints—Lifting Plates—Moulds Struck up in Loam—Fragile Patterns—Patterns for Plate Moulding—Sectional Patterns—Toothed Wheel Patterns—Worm Patterns—Arrangement of Core Boxes—Use of Plaster of Paris—Screw Propellers—Oblique Patterns—Framed Patterns—Boxed-up Patterns—Horizontal Flanges—Solid Patterns Built in Sections—Additions to Patterns due to Exigencies of Casting—Registration of Patterns—Pattern Shop Machinery.

PRESS OPINIONS.

"Mechanical engineering students and apprentices, and even more experienced men, will find this book of considerable assistance to them in the pattern and moulding shops."—*Glasgow Herald*.

"This is a useful addition to the existing works on pattern making, particularly by reason of the inclusion of a number of well-drawn sketches, many being rendered still more useful by the addition of dimensions."—*Mechanical World*.

Price 4/4, post free.

The Scientific Publishing Co.,

53, NEW BAILEY STREET,

MANCHESTER, ENGLAND.

	PAGE		PAGE
British Standard Nuts and Bolt Heads	92, 93	Carbonic Acid, Specific Heat	186
British Standard Pipe Threads	95	Carbonic Oxide, Combustion	210
British Standard Screwing for Marine Boiler Stays	117	Carbonic Oxide, Flame Temp.	195
British Standard, Whitworth, Screw Threads	86	Carbonic Oxide, Heating Value	186
British Thermal Unit	3	Carbonic Oxide, Yield in Gas Producer, per ton of Coke	199
British Westinghouse Turbine	287	Oastings, Contraction of	533
Bromine, Atomic Weight	559	Castings, Copper, Composition	83
Bromine, Specific Heat	559	Castings, Steel	110, 509, 523
Bronze Aluminium	521, 538	Castings, Weight	489
Bronze, Composition of	83	Cast-iron Balls, Weight	64
Bronze, Phosphor, Tenacity	108	Cast Iron, Chilled	502
Bronze, Strength	537	Cast Iron, Effect of Aluminium	498
Broughton Copper Co., Tubes	72, 74	Cast Iron, Effect of Phosphorus	498
Brush-Parsons Turbine	281	Cast Iron, Effect of Silicon	498
Buildings, Heating	573	Cast Iron, Effect of Temperature on Strength	105, 537
Bunsen Flame, Heat of	185	Cast Iron, Expansion	105
Burners for Oil Fuel	212	Cast Iron, Factor of Safety	105
Butt Straps for Boilers	111	Cast Iron, Malleable	105, 502, 529
		Cast Iron, Modulus Elasticity	539
		Cast-iron Pipes, Weight	67
		Cast Iron, Strength	105, 528, 529, 537
		Cast Iron, Sulphur in	498
		Cast Iron, Use in Foundry	500
		Cast-iron Varieties	499
		Cast Iron, Weight	489
		Cast Steel	106, 523, 537
		Caustic Soda, Use in Boilers	178
		Cedar, Weight	489
		Cement, Expansion of	78
		Cement, Portland, Strength	82
		Cement, Specific Gravity	78
		Cement, Specific Heat	78
		Cement, Weight per cub. ft.	78
		Centigrade Degrees Conversion to Fahrenheit	102
		Centrifugal Action in Ropes	460
		Centrifugal Force	249
		Centrifugal Pumps, Efficiency	419, 452
		Centrifugal Pumps, Proportions	452
		Centrifugal Pumps, Speed	452
		Centrifugal Pumps, Velocity of Flow and Delivery	419, 452
		Chains, Admiralty Test	494
		Chains, Annealing	493
		Chains, Driving	481
		Chains, Effect of Welding	493
		Chains, Elswick Test	494
		Chains, Forms of	493
		Chains, Galvanising	498
		Chains, Strength of	494
		Chains, Weldless	495

For Buyers' Directory see pages xii., xiii., xiv.

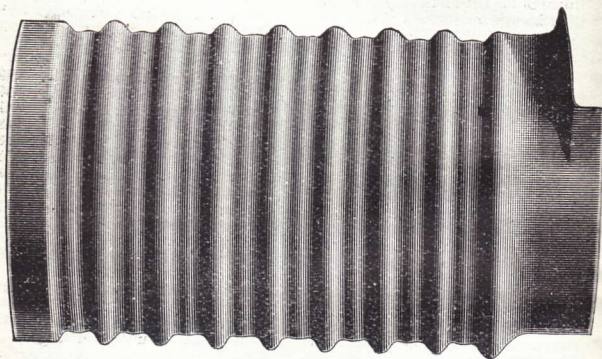
AWARDED 2 BRONZE MEDALS, PARIS EXHIBITION, 1900.

DEIGHTON'S
PATENT

Flue & Tube Co. Ltd.

DEIGHTON'S FURNACE.

Telephone (National) 1674. Telegrams—"FLUES, LEEDS."



 The Destructive Tests have proved the DEIGHTON FURNACE to be the strongest to resist collapse ever made.

It is also unequalled for Uniformity of Thickness and Easy Scaling.

SEND FOR COPY OF TEST RESULTS AND FORMULÆ.

Makers of Marine and Land Boiler Furnaces.

VULCAN WORKS, Pepper Road, LEEDS.

	PAGE		PAGE
Charcoal, Analysis of	197	Coals for Coke Making	196
Charcoal, Caloric Value	197	Coals for Gas Making	196
Charcoal Pig Iron	499	Coals, Kinds of	196
Chemical Reactions, Heat of	563	Cobalt, Atomic Weight	559
Chemical Reagents	562	Cobalt, Specific Heat	559
Chemical Symbols	560	Coefficient Expansion, Linear	78
Chemistry, Thermal	563	Coefficient Expansion of Metals	78
Chilled Castings	502	Coke, Analysis of Various	197
Chimney Draught	214	Coke Gas, Analysis	197
Chimneys, Area of	215	Coke, Specific Gravity	78
Chimneys, Best Temperature	214	Coke, Specific Heat	78
Chimneys, Height of	215	Coke, Weight, per cub. ft.	78
Chimneys, Water Column	215	Coking Coals	196
Chisel Steel, Carbon in	504	Coking Firing	206
Chisels, Tempering Heat	505	Coking Stokers	208
Chlorine, Atomic Weight	559	Cold Blast Pig Iron	499
Chlorine, Specific Heat	559	Cold Short Wrought Iron	502
Chrome Iron	499	Colours and Temperature	193
Chromium, Atomic Weight	559	Colours in Steel Tempering	505
Chromium, Specific Heat	559	Column of Water, Pressure	3, 424
Chromium Steels	516	Combustion, Air Required	157
Cinder Pig Iron	499	Combustion Chambers, Girders	114
Circles, Areas and Circumferences	21, 27	Combustion Chambers, Stress on Tube Plate	114
Circles, Small, Areas	23	Combustion, Chemistry of	187
Circular & Di-metral Pitches	482	Combustion, Constants	186
Circulating Pumps	445	Combustion, Forced Draught	216
Circulation in Boilers	127, 143	Combustion, Heat Waste	187
Clearance in Engines	232, 238, 244	Combustion, Hydrocarbons	206
Clearance in Turbines	259	Combustion, Intensity of	206
Clearance Volume, Gas Engines	367	Combustion of Gases	187
Cleveland Pig Iron	499	Combustion of Towns' Refuse	221
Coal, Anthracite	196	Combustion, Products of	187, 205
Coal, Ash and Clinker	205	Combustion, Rate in Boilers	214
Coal, Bituminous	194	Combustion, Surface	190
Coal, Composition of Ash	205	Commutators for Turbo-Dynamos	291
Coal, Constituents of	194	Composition, Alloys and Bearing Metals	83
Coal Consumption, Large Gas Engines	384	Compound Engines, Cylinder Ratios	225
Coal Consumption, Locomotives	315	Compound Engines, Mean Pressures	228, 231
Coal, Flame Temperatures	195	Compound Engines, Steam Consumptions	242, 243
Coal Gas, Analysis	195, 199	Compound Locos	305
Coal Gas, Combustion of	199	Compression in Gas Engines	367
Coal Gas, Density	186	Compressors, Turbo	287
Coal Gas, Flame Temperature	195	Concrete, Strength Crushing	82
Coal Gas, Heating Value	186, 195	Condensers, Circulating Water	258
Coal Gas, Specific Gravity	186	Condensation, Rate of	166
Coal Lignite	194	Condensation, Steam Pipes	166
Coal, Moisture in	205	Condensers, Air Pumps	258
Coal, Non-caking	196	Condensers, Drainage	258
Coal, Specific Gravity	78	Condensers, Ejector	259
Coal, Specific Heat	78	Condensers, Evaporative	259
Coal Washing	198	Condensers for Turbines	278
Coal, Weight, per cub. ft.	78		
Coals, Cannel	196		
Coals, Coking	196		

For Buyers' Directory see pages xii, xiii, xiv.

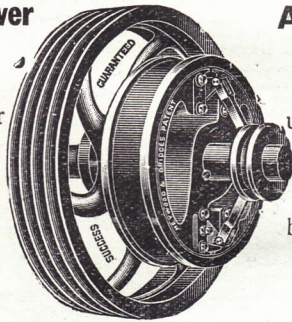
HEYWOOD AND BRIDGE'S FRICTION CLUTCHES

Have stood the test on all drives.

Can be put in and out of gear when running at full speed without any shock or jar taking place.

Any Power

Quickly
repay their
initial cost
by the
economies
effected
in power.



Any Speed

Save
unnecessary
wear and
tear on
belting, etc.
Prevent
Accidents.

MODERN

MILLWRIGHT'S WORK.

We have fitted up a large number of Cotton Mills, Factories, Works at home and abroad with Millwright's Work throughout.

Send for 200-page Catalogue (free):

DAVID BRIDGE & CO. Ltd.

SOLE MAKERS,

Transmission Works, CASTLETON, MANCHESTER.

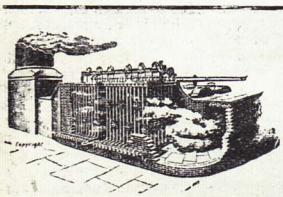
	PAGE		PAGE
Condensers, Jet.....	255	Cornuts' Heat Formula	189
Condensers, Surface	257	Corrosion, Boiler Tubes	144
Condensing Eng., Back Press..	224	Corrosion in Boilers	179
Condensing Engines, Mean		Corrugated Furnaces, Strength	113
Pressures	228, 231	Cosines of Angles	56
Condensing Engines, Steam		Cost of Steel Shafts	480
Consumption	242, 243	Cost of Treating Refuse	221
Condensing Water Coolers	260	Cotangents and Tangents	56
Condensing Water Storage	259	Couch, Efficiency Firebox	
Conduction, Heat Transmis-		Heating Surface	123
sion by	123	Coulomb, Definition	13
Cone, Area and Contents	20	Coverings, Boiler	184
Connecting Rods, Gas Engines	375	Coverings, Steam Pipes	165
Connecting Rods, High-speed		Covers of Engine Cylinders ..	244
Engines	238	Cranes, Chafos	493
Contraction of Castings	533	Cranes, Electric, Efficiency of.	485
Contraction of Water Jet	418	Cranes, Electric, Design	483
Contraction, Steam Pipes	164	Cranes, Electric, Power	486
Convection, Heat Transmission		Crank Angles and Piston	
by	123	Positions	338
Cooling Gas Engines by Water		Crank Pins, Bearing Pressure	
Injection	385	236, 477	
Copper, Arsenic in	107	Crank Pins, Locomotives	304
Copper, Atomic Weight	559	Crank Shaft Bearings, Pressure	477
Copper Bends for Steam Pipes.	163	Crank Shaft, Gas Engines	375
Copper Boiler Tubes ..108, 531,	53	Crank Shaft Governors	255
Copper Castings, Composition.	83	Crank Shafts, B. of T. Rule ..	246
Copper Castings, Strength	108	Crosshead Journal, Bearing.256,	477
Copper Cylinder, System of		Crosshead Pins, Gas Engines.	375
Heating	147	Crossheads, High-speed Eng..	238
Copper, Effect on Steel	510	Crossheads, Locomotives	304
Copper, Effect on Wrought Iron	502	Crossley Gas Engine Trial	396
Copper, Expansion of	78	Crossley Gas Producer	396, 399
Copper Firebox Plates.107,297,	78	Crossley Oil Engine, Trial of ..	411
Copper, Melting Point	531	Crucible Steel, Manufacture ..	506
Copper, Properties	530	Crucible Steel, Shearing	
Copper, Strength ..107,108,537,	538	Strength	537
Copper, Specific Gravity	78	Crushing Load of Balls	471
Copper, Specific Heat	78, 559	Crushing Strength, Ball Bear-	
Copper Staybolts	107, 531	ings	471
Copper Steam Pipes, strength	162	Crushing Strength of Ice	77
Copper Tubes, Weight	72	Crushing Stress for Furnace	
Copper, Weight	78, 489	Tubes, B. of T. Rule	112
Copper, Weight per Square Foot	60	Cubes and Squares of Numbers	35
Copper-wire, Weight	59	Current, Electrical Unit of ..	14
Corliss Engines	224	Curtis Turbine	269, 284, 285
Corliss Engines, Piston Speeds	224	Curves, Railroad, Versed Sine	316
Corliss Gears, Designing	347	Cushioning Chambers, Pumps	442
Corliss Valve, Dashpots	354	Cut-off Governors	252
Cornish Boilers, Accessibility.	126	Cycle Diagram for Gas Engine	355
Cornish Boilers, Evaporation	128	Cycles, Large Gas Engines ..	381
Cornish Boiler Flues	126	Cycloid, Area of	20
Cornish Boilers, Grate Surface		Cycloid, How to Draw	20
and Heating Surface	128	Cyclone Separator	573
Cornish Boilers, Power of	128	Cylinder, Area and Contents ..	20
Cornish Boilers, Proportions ..	126	Cylinder Covers, Thickness of	244
Cornish Multitubular Boilers.	134	Cylinder Oils, Selection of	475

For Buyers' Directory see pages xii. xiii., xiv.

GREEN'S ECONOMISER

**SAVES ONE WAGON OF COAL
IN EVERY FIVE.**

**CAN BE APPLIED TO EVERY TYPE OF
STEAM BOILER.**



Write for Pamphlet "A.B."

**E. Green & Son Ltd.,
WAKEFIELD.**

FOWLER'S

Architects' and Builders' Handbook.

A synopsis of practical Rules, Tables and Data, specially compiled for the use of Architects, Builders, Plumbers, Painters, Decorators and Students.

Comprising over 500 pages with numerous Illustrations

CONTAINS EXHAUSTIVE SECTIONS ON

Bricklaying — Masonry — Timber — Joinery and Carpentry — Plumbing — Painting and Decorating — Electricity — Superintendence of Buildings during construction — Protective Coatings for Iron and Steel, &c. — Styles of Architecture — Working Rules for Building Trades, &c., &c.

Price 2/9, Post Free, in ordinary binding.

„ 3/9, „ in leather, gilt edges.

THE SCIENTIFIC PUBLISHING Co.

53, New Bailey Street, MANCHESTER, England.

	PAGE		PAGE
Cylinder Ratios of Steam Engines	225, 265	Domestic Hot Water Boilers ..	145
Cylinder Relief Valves	244	Double-acting Steam Engines ..	235
Cylinders, Corliss	347	Dowson Gas	204, 393
Cylinders, Dimensions	265	Dowson Gas Plant, Test	399
Cylinders, Engine, Thickness of ..	244	Drainage, Condensers	258
Cylinders, Gas Engines	374, 384	Drainage, Steam Engine	232
Cylinders, Hydraulic, Design ..	422	Drainage, Steam Pipes	162
Cylinders, Hydraulic, Strength ..	424	Drives, Large Gas Engines	383
Cylinders of Locomotives	298	Driving Chains	481
Cylinders of Oil Engines, Size ..	411	Driving-wheel Springs	301

D

Dalby, Heat Transmission through Boiler Plates	122	Durston, Experiments on Heat Transmission	123
Dampers	219	Dust Fuel Stokers	209
Dashpots, Corliss Valves	354	Dust Removal from Rooms	570, 572
Davey Paxman Gas Plant, Test ..	399	Dutch Metal, Composition	83
Davey Paxman Oil Engine	411	Duty, Pumping Engines	438
Decimal Equivalents, Fractions ..	6	Dyne, Unit of Force	15
Decimal Equivalents, Stubs	39	Dynes, Value	3
Wire Gauge	39		
Deflection of Beams	539, 545		
Degree of Hardness of Water	177		
De Laval Turbine	268, 281		
Deighton's Furnace, Board of Trade Rule	113		
Delta Metal	108, 532, 538		
Density and Pressure of Air, 3 ..	186		
Density, British and Metrical Equivalents	2		
Density, Gases	186		
Density, Metals, Alloys, &c. ..	78		
Density, Oils	186		
Density, Saturated Air	3		
Density, Sea Water	157		
Density, Water	77		
Destructor Furnaces	220		
Deutschland, s.s., Dimensions ..	76		
Dewrance and Woods, Efficiency Firebox Heating Surface	122		
Diagram Factors of Engines	223		
Diagrams from Gas Engines	355, 357, 361		
Diagram, Wrist Plate	350		
Diametral and Circular Pitches ..	482		
Diesel Engine, Description	406		
Diesel Engine, Explosions and Breakdowns	407		
Diesel Engine, Test of	407		
Disc Friction in Turbines	271		
Dished Boiler Ends	114		
Displacement Pumps	418		

E

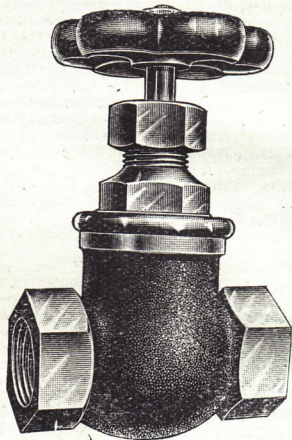
Ebelmen's Gas, Analysis	203
Economiser, Green's	174
Economiser, Water Tube Boiler ..	176
Efficiency, Boilers	181
Efficiency, Centrifugal Pump	419
Efficiency, Cranes	485
Efficiency, Economisers	175
Efficiency, Gas Engines	364, 378
Efficiency, Locomotives	135, 310, 315
Efficiency, Oil Engines	411
Efficiency, Pumps	436
Efficiency, Rope Knots	457
Efficiency, Steam Engines	227
Efficiency, Steam Turbines	80
Efficiency, Ventilation, Smoke Test	573
Egg-ended Boilers, Features	140
Egg-ended Boilers, Overheating ..	140
Egg-ended Boilers, Proportions ..	140
Egg-ended Boilers, Seam Rips	140
Ehrhardt and Sehmer Gas Engine	383
Ejector Condensers	259
Elasticity Modulus	539
Electric Cranes, Design	483
Electric Cranes, Power	486
Electric Generators, Turbo	291
Electric Speed Changer	256
Electric Stop Motions	255
Electrical B. of T. Unit	14

For Buyers' Directory see pages xii, xiii, xiv.

HARLOW'S

— PATENT —

RENEWABLE SEATING VALVE.



Massive Design.
Suitable for High Pressures.
Seatings Easily Renewed without
Special Tools.

SEND FOR LIST

ROBERT HARLOW & SON,

STOCKPORT.

Telephone—No. 42,

Telegrams—"HARLOW," STOCKPORT.

	PAGE		PAGE
Electrical Units	11	Engines, Steam, Jet Condensers	256
Electro-Magnetic System, Units	14	Engines, Steam Mean Pressure	223, 227, 231
Elephant Boilers, Features ..	140	Engines, Steam, Mechanical	Efficiency
Ellipse, Area	22		227
Ellipsoid, Volume	22	Engines, Steam, Pistons	245
Elm, Comparative Stiffness ..	80	Engines, Steam Port Area ..	244
Elm, Crushing Strength	80	Engines, Steam, Pressure on	Journals
Elm, Modulus of Elasticity ..	80		236
Elm, Special Properties	80	Engines, Steam, Proportions ..	244
Elm, Tensile Strength	80	Engines, Steam, Ratio of Ex-	pansion
Elm, Weight of Cubic Foot ..	80		227, 230
End Thrust in Turbines	273	Engines, Steam, Receivers ..	244
Engine and Boiler Co., Hy-		Engines, Steam, Relief Valves.	244
draulic Tests	183	Engines, Steam, Uniflow	240
Engines of Atlantic Liners	76	Engines, Steam, Valves and	Valve Gears
Engines, Condensing, Steam			333
Consumption	242, 243	Engines, Steam, Single and	Double-Acting
Engines, Gas (see Gas)			235
Engines, Non-condensing,		Engines, Steam, Superheating	260
Steam Consumption	242, 243	Engines, Steam, Surface Con-	densers
Engines, Pumping	436, 438		257
Engines, Steam, Air Pumps ..	258	Engines, Steam, Walsend Slip-	way
Engines, Steam, Back Pressure	224		281
Engines, Steam, Bellis and		Engines, Steam, Yates and	Thom
Morcom	281		281
Engines, Steam, Clearance	232, 238, 244	Entropy	331
Engines, Steam, Condensation		Equivalents, decimal frac-	tions
Engines, Steam, Condensing			6
Water	257	Equivalents, English and	French
Engines, Steam Consumption,			1, 5, 6, 7, 9
226, 232, 242, 243		Equivalent Evaporation	182
Engines, Steam, Corliss Valves	348	Erg, Unit of Work	15
Engines, Steam, Crank Shaft,		Essen Water Gas Analysis	204
B. of T.	246	Evaporation, Equivalent	182
Engines, Steam, Crank Shaft,		Evaporation of Cornish Boilers	128
Lloyds	247	Evaporation of Lanc. Boilers ..	130
Engines, Steam, Cylinder Cover	244	Evaporation, Locomotives	315
Engines, Steam, Cylinder		Evaporative Condensers	259
Ratios	225, 265	Evaporative Performances of	Locomotive Boilers
Engines, Steam, Cylinder Studs	245		310
Engines, Steam, Cylinder		Evaporative Tests, Boilers	181
Thickness	244	Evaporators	171
Engines, Steam, Data of Exist-		Evaporators, B. of T. Rules ..	173
ing	265	Evaporators, Mountings for ..	174
Engines, Steam, Diagram		Evaporators, Reducing Nozzles	174
Factors	223	Exhaust Injectors	454
Engines, Steam, Ejector Con-		Exhaust Injectors, Deliveries	457
densers	259	Exhaust Injectors, Size	457
Engines, Steam, Entropy	331	Exhaust Ports, Engines	244
Engines, Steam, Evapor. Con-		Exhaust Ports, Locomotives ..	298
densers	259	Exhaust Steam Heaters	171
Engines, Steam, Flywheels ..	250	Exhaust System, Ventilation ..	571
Engines, Steam, Governors ..	251	Expansion, Economisers	176
Engines, Steam, High Speed ..	234	Expansion, Gases	186
Engines, Steam, Inertia Forces	249	Expansion, Linear Coefficient.	78
Engines, Steam Jacketing	262	Expansion, Metals, &c.	78

For Buyers' Directory see pages xii., xiii., xiv.

b M

The "PROCTOR" Patent Shovel STOKER.

Of the 4,000 Steam Users in the Textile
Trades of Lancashire and Yorkshire,

Over 1,000 have this Stoker at Work.

**PROCTOR'S
COAL ELEVATOR**
Fitted with PATENT
RAM FEED BOOT.

Coal Fed into Buckets by Ram.

Traverse of Ram can be regulated to
supply the quantity of Coal required.

NO JAMMING of Buckets or Chain through
overfeeding.

REPAIRS ON ELEVATORS
REDUCED fully **75%**

JAMES PROCTOR Ltd.

Hammerton St.
Ironworks, **BURNLEY.**

	PAGE		PAGE
Expansion Ratio, Steam Engines.....	227, 230	Flow of Water, Loss from Contraction and Enlargement ..	418
Expansion, Steam Pipes.....	164	Flow of Water over Weirs ..	417
Expansion, Water.....	77	Flow of Water through Orifice.	417
Explosion, Diesel Engines.....	407	Flow of Water through Pipes.	418
Explosion, Pressure, Gas Engines.....	373	Flow through Plug Tap ..	419
Explo. Mixtures, Gas and Air.	364	Flow through Sluice Valve ..	419
		Flue Tubes, Strength.....	111
		Flues, Boiler ..	184
		Flywheels for Gas Engines....	375
		Flywheels for Steam Engines.	250
		Forced Draught, Blowers v. Fans ..	218
		Forced Draught, Closed Ashpit	217
		Forced Draught, Closed Stoker Hold ..	217
		Forced Draught, Combustion ..	216
		Forced Draught, Influence on Heating Surface.....	216
		Forced Draught, Locomotives.	216
		Forced Draught, Marine Practice.....	217
		Forced Draught, Pressure ..	217
		Forced Lubrication ..	476
		Forced Lubrication, High-speed Engines ..	236
		F-rings, Steel ..	110, 508
		Fossil Meal Covering ..	166
		Foundry Pig-iron, Remelting ..	501
		Foundry, Use of Pig-iron ..	500
		Fox's Tubes, B. of T. Rule.....	113
		French and English Equivalents ..	1, 5, 6, 7, 9
		French Horse-power.....	4
		Friction, Ball Bearings ..	473
		Friction, Bends and Valves ..	419
		Friction, Locomotives ..	306
		Friction Losses, Pumps ..	457
		Friction, Piston Valves ..	302
		Friction, Ropes, Wire ..	454
		Friction, Roller Bearings ..	474
		Friction, Turbine Discs ..	271
		Friction, Water in Pipes.....	418
		Fuel, Bituminous ..	194
		Fuel, Charcoal, Calorific Value ..	197
		Fuel, Coke, Analysis ..	197
		Fuel, Liquid, Advantages ..	212
		Fuel, Oil ..	212
		Fuel, Peat, Composition ..	193
		Fuel, Peat Gas Analysis ..	193, 204
		Fuel, Petroleum and Coal Relative Heating Value ..	198
		Fuel Producer, Gas, Heat Loss ..	199
		Fuel, Washed Coal ..	198
		Fuel, Wood ..	193, 195
		Fuels, Boiler ..	205
		Fuels. Calculation of Heat of..	188

For Buyers' Directory see pages xii., xiii., xiv.

Practical Alternating Currents

.. AND ..

Alternating Current Testing

Deals in an elementary and practical manner with the principles of alternating currents and alternating current machinery.

By CHARLES F. SMITH,

Wh.Sc., A.M.Inst.C.E., A.M.Inst.E.E.

Contents.

Alternating Electromotive Force and Current—Impedance—Power and Power Factor—Virtual Value of an Alternating Current—Effect of Capacity—The Transformer—Alternators—Synchronous Motors—The Polyphase Circuit—The Rotary Converter—The Polyphase Induction Motor—Single-phase Motors—The Composition of Waves.

Press Opinions.

"We think the treatment of the subject very clear, and believe that a book of this type will be of far more practical use to the student than one which is so full of difficult mathematics that the young electrician becomes disheartened at the beginning."—*The Engineer*.

"The book will be useful to students as a guide in performing experiments and in making deductions from the data thus gained, and it will also be helpful to persons who have a practical knowledge of the machines treated, and who wish to understand the theory underlying their performance."—*Engineering News*.

"The book is fairly complete, and may be considered to be a treatise on the subject."—*Electrical Review*.

Price 6/5, post free.

The Scientific Publishing Co.

53, New Bailey Street,
MANCHESTER, England.

	PAGE
Locos., Boiler Tubes	297
Locos., Coal Consumption	315
Locomotives, Compound	305
Locomotives, Crossheads	304
Locomotives, Cylinders	298
Locomotives, Efficiency	315
Locos., English Expresses	308
Locomotives, Evaporation	315
Locomotives, Exhaust Ports	298
Locomotives, Firebox, Efficiency of Heating Surface ..	122
Locomotives, Firebox, Staying ..	117, 297
Locomotives, Friction	306
Locos., Heating Surface	135, 296
Locomotives, Horse-power	296
Locos., Journals, Crank Pins ..	303
Locomotives, Length of Stroke ..	298
Locomotives, Link Motion	346
Locomotives, Material	316
Locomotives, Nickel Steel for ..	514
Locomotives, Performances ..	310
Locomotives Piston Speed	224, 298
Locomotives, Piston Valves	302
Loco. Plate Springs	547
Locos., Power and Grate Area ..	136
Locomotives, Single Engines	305
Locomotives, Slidebars	304
Locomotives, Smokebox Temperature	125
Locomotives, Springs	301
Locomotives Steam Consumption ..	212, 316
Locomotives, Steam Ports	298
Locomotives, Superheating	307
Locomotives, Tractive Force	296
Locomotives, Train Resistance ..	295
Logarithms	5, 40, 60
L. & N. W. Steam Rail Cars	312
L. & S. W. Steam Rail Cars	312
Longridge on Superheating	262
Longridge on Wheel Teeth	468
Longridge, Test of Nicolson Boiler	115
Longridge's Rule for Furnaces ..	112
Lost Heat in Producer Gas	199
L. B. & S. C. Express Loco. ..	308
L. B. & S. C. Rail Motor Car ..	312
L. & N. W. Express Loco.	308
L. & S. W. Express Locos.	308
Low Water-Gas, Analysis	204
Low-water Safety Valves	156
Lubricating Oils, Acidity	476
Lubricating Oils, Effect on Metals	476
Lubricating Oils, Flash Point ..	475
Lubricating Oils, Gumminess ..	476
Lubricating Oils, Selection	475
Lubricating Oils, Viscosity	476
Lubrication, Ball Bearings	472
Lubrication, Chains	482
Lubrication, Forced	477
Lubrication, High speed Engines	236
Lubrication, Systems of	477
Lusitania, s s., Dimensions	76

M

Magnesium, Atomic Weight	559
Magnesium, Specific Heat	559
Magnalium, Weight per sq. ft. ..	60
Mahler, Caloric Value, Fuels	195
Mahogany, Elasticity	80
Mahogany, Special Properties ..	80
Mahogany, Strength	80
Mahogany, Weight	80
Malleable Cast-iron	105, 502, 529
M. S. U. A. Hydraulic Tests	183
Manganese, Atomic Weight	559
Manganese, Effect on Pig Iron ..	498
Manganese, Effect on Steel	510
Manganese, Specific Heat	559
Manganese Steel, Hadfield's ..	512
Manganese Steel, Tenacity	512
Manholes, Mouthpieces and Strengthening Rings	117
Manholes, Thickness and Number of Bolts	118
Manilla Rope, Working Loads ..	487
Maple, Weight	489
Marine Boilers, Admiralty Tests ..	139
Marine Boilers, British Standard Screwing for Stays	117
Marine Boilers, Circulation in ..	138
Marine Boilers, Combustion	138
Marine Boilers, Draught	217
Marine Boilers, Retarders	139
Marine Boilers, Serve Tubes	121
Marine Engine Shafts	246
Marine Engines, Piston Speeds ..	224
Marine Multitubular Boiler	138
Marine Turbines	290
Marsh Gas, Density	186
Marsh Gas, Heating Value	186
Marsh Gas, Specific Gravity	186
Marsh Gas, Specific Heat	186
Mars Superheater	262
Masonry, Expansion	78
Masonry, Crushing Strength	82
Masonry, Specific Gravity	78
Masonry, Specific Heat	78

For Buyers' Directory see pages xii., xiii., xiv.

Indicator Diagrams.

A Treatise on the use of the Indicator
and its application to the Steam Engine.

By **W. W. F. PULLEN,**

Wh.Sc., M.I.Mech.E., A.M.Inst.C.E.

Contents.

Measurement of Power with the Indicator—Indicator Rigs—Reducing Gears—Types of Indicators—Calibrating Indicator Springs—Errors in the Indicator Diagram—Preliminary Analysis of the Diagram—Diagrams Showing Variation of Load—The Admission and Steam Lines of the Indicator Diagram—The Exhaust and Compression Lines—Valve Chest and Steam Pipe Diagrams—Adjustment of the Slide Valve—Pump Diagrams—Miscellaneous Diagrams—Averaging Diagrams—Mechanical Efficiency—Tables, &c., &c.

Press Opinions.

"This exhaustive work upon indicator practice contains, in addition to much original matter, a compilation of about all the valuable data concerning indicator practice which has appeared in technical journals during the past few years."—*Electrical World and Engineer.*

"Students of the steam engine and its mechanism will find this book very useful to them. It sticks to its one subject throughout—the indicator—and does not branch out into questions of thermo-dynamics. It is a special work on a special instrument, and keeps to its text."—*Electrical Review.*

Price **6/4**, Post Free.

The Scientific Publishing Co.,

53, NEW BAILEY STREET,
MANCHESTER, England.

	PAGE		PAGE
Slide Valves	333	Springs, Governor	552
Slide Valve, Flow Through ..	419	Springs, Helical and Spiral ..	541
Slide Valves, Steam	149	Springs, Indicator	362
Smoke, Observations	208	Springs for Locos	301
Smoke Prevention	206	Springs, Plate	553
Smoke Test, Ventilation	573	Springs for Safety Valves ..	153
Smoke Tubes, Holding Power	119	Sprinkling Stokers	209
Smoke Tubes, Loco. 121, 297		Sprockets, Chains	481
Smoke Tubes, Nickel Steel ..	107	Spruce, Strength and Elasticity	80
Smoke Tubes, Retarders for ..	121	Spur Wheels	467
Smokebox Temperature	121	Square Iron, Weight	65
Soda Ash, Use in Boilers ..	178	Square Steel, Weight	66
Soda, Caustic, Use in Boilers..	178	Squares and Cubes	35
Sodium, Atomic Weight	559	Staffordshire Pig Iron	499
Sodium, Specific Heat	559	Stages, Number in Turbines..	273
Softening Feed Water	178	Stanton, Repetitions of Stress	534
Soldering Aluminium	521	Stanton Surface Condensers ..	258
Solders, Composition of	83	Starters, Gas Engines	377, 383
Solids, Mensuration of	17	Statuary, Bronze, Composition	83
Soot on Boiler Plates, Effect of	123	Stay Bars, B. of T. Rule	115
South-Eastern Express Engines	308	Stay Bolts, Copper	531
Specific Gravity, Aluminium ..	520	Staying Surfaces of Locos ..	117
Specific Gravity of Gases	186	Stays for Marine Boilers, British Standard Screwing..	117
Specific Gravity of Ics	77	Steam Accumulators	286
Specific Gravity, Metals, etc ..	78	Steam Boilers	105
Specific Gravity of Oils, 78, 186,	198	(See Boilers for Detail Index.)	
Specific Gravity, Petroleum 186,	410	Steam Consumption, Engines	226, 232, 242, 243
Specific Heat, Ice	77	Steam Consumption, Loco- motives	316
Specific Heat of Gases	186	Steam Consumption, Pumps ..	437
Specific Heat, Metals	78, 559	Steam Consumption, Turbines	280—287
Specific Heat, Petroleum .. 186,	410	Steam, Density	320
Specific Heat, Steam	186	Steam Dryers	151
Specific Heat, Superheated Steam	263	Steam Engine, Mechanical Efficiency	227
Speculum Metal, Composition	83	Steam Engine, Ratio of Ex- pansion	227, 230
Speed, Belts	464	Steam Engines, Air Pumps ..	258
Speed, Chains, Driving	481	Steam Engines Clearance ..	282
Speed Changer, Electric	256	Steam Engines, Condenser, Water	257
Speed, Driving Ropes, Limits..	461	Steam Engines, Condenser ..	256
Speed, Gear Wheels	458	Steam Engines, Consump. 226,	232
Speed, High Speed Engines ..	237	Steam Engines, Crank Angles.	246
Speed, Pistons of Engines ..	234	Steam Engines, Crank Shafts..	246
Speed, Pulleys	466	Steam Engines, Cylinder Cover	244
Speed, Ropes	461	Steam Engines, Cyl. Ratio.	225, 265
Speed, Variations in Engines..	252	Steam Engines, Cyl. Relief Valve	244
Speeds, Shafting	478	Steam Engines, Cyl. Thickness	244
Speeds, Steam Turbines	268, 269, 276	Steam Engines, Data of Existing	265
Speeds, Surface, Rotating Bodies	97		
Sphere, Area and Contents ..	21		
Spiegeleisen Composition ..	499		
Spiral Gears	469		
Spiral Retarders	121		
Spiral Spring, Strength	547		
Spreading, Firing	205		
Spring Balance Safety Valves..	155		

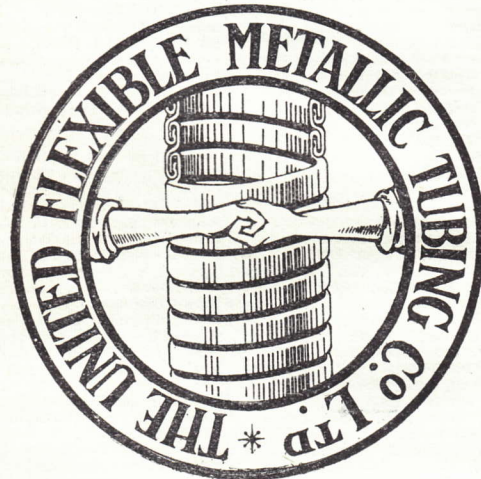
For Buyers' Directory see pages xii., xiii., xiv.

METALLIC FLEXIBLE HOSE

.. FOR ..

**HIGHEST STEAM PRESSURES,
Gas, Water, Oils, &c.**

Unrivalled for Pumping Petroleum.



**Inventors & Original Makers of the
CELEBRATED INTERLOCKED SECTION**

As supplied to the Admiralty, War Office,
H.M. Office of Works, etc., etc.

112, QUEEN VICTORIA ST., LONDON, E.C.

Works : PONDER'S END, Middlesex.

ON ADMIRALTY LIST.

	PAGE	PAGE	
Steam Engines, Diagram Fac- tors	223	Steam, Sensible Heat	318
Steam Engines Drainage	232	Steam, Specific Gravity	186
Steam Engines, Ejector Con- denser	259	Steam, Specific Heat	186
Steam Engines, Entropy	331	Steam, Spec. Volume	320
Steam Engines, Evap. Con- densers	259	Steam Stop Valves	149
Steam Engines, Flywheels	250	Steam, Table of Properties	321
Steam Engines, Governors	251	Steam, Temp. & Pressure	317
Steam Engines, High-speed	234	Steam Tests of Boilers	183
Steam Engine, Horse Power	223	Steam, Total Heat	319
Steam Engines, Inertia Forces in	249	Steam Traps	168
Steam Engines, Jacketing	262	Steam Turbine, A.E.G.	269
Steam Engines, Jet Condenser	236	Steam Turbines, Attachment of Blades	274
Steam Engines, Journals	235, 245	Steam Turbines, Balancing	276
Steam Engines, Leakage	232	Steam Turbines, Bearings	276
Steam Engines, Pipe and Port Areas	244	Steam Turbines, Best Vacuum	279
Steam Engines, Piston Speed	224	Steam Turbines, Blade Angles	274
Steam Engines, Pistons	245	Steam Turbines, Blades	272, 274, 288
Steam Engine, Pressure, Mean	223, 227	Steam Turbines, Blade Strip- ping	288
Steam Engines, Propors	244	Steam Turbines, British-West- inghouse	287
Steam Engines Receivers	244	Steam Turbines, Brush-Parsons	281
Steam Engines, Single and Double Acting	235	Steam Turbines, Classification	267
Steam Engines, Superheaters	260	Steam Turbines Clearances	269
Steam Engines, Uniflow	240	Steam Turbines, Comparison with Reciprocating Engines	281
Steam Engines, Valve Gears	333	Steam Turbines, Condensers	278
Steam Engines, Water Coolers	260	Steam Turbines, Critical Speeds	276
Steam, Entropy Table	331	Steam Turbines, Curtis	269, 284, 285
Steam Feed Water Heaters	171	Steam Turbines, De Laval	268, 281
Steam, Flow in Pipes and Ports	420	Steam Turbines, Disc Friction	271
Steam, Flow through Orifice	417	Steam Turbines, Effect of Initial Steam Pressure	280
Steam, Flow through Nozzles	271	Steam Turbines, Effect of Load	281
Steam, Heat Equivalent of External Work	320	Steam Turbines, Effect of Superheat	280
Steam Jet Blowers & Fans	218	Steam Turbines, Effect of Vacuum	280, 282
Steam, Latent Heat	318	Steam Turbines, Efficiency	281
Steam Pipes, Admiralty Prac- tice	163	Steam Turbines, End Thrust	273
Steam Pipes, Areas	244	Steam Turbines, Flow of Steam through Nozzles	271
Steam Pipes, B. of F. Rules	162	Steam Turbines, Geared	291
Steam Pipes, Condensation	166	Steam Turbines, Governing	277
Steam Pipes, Copper	163	Steam Turbines, Gyroscopic Action	276
Steam Pipes, Drainage	162	Steam Turbines, Ljungstrom	267, 270, 275, 286
Steam Pipes, Expansion	164	Steam Turbines, Low Pressure	286
Steam Pipes, Hydraulic Tests	165	Steam Turbines, Marine	290
Steam Pipes, Iron, Strength	162	Steam Turbines, Mixed Pres- sure	287
Steam Pipes, Joints	162	Steam Turbines, Nozzles	270
Steam Pipes, Non-conducting Coverings	165	Steam Turbines, Packings	289
Steam Pipes, Radiation	333		
Steam Port, Areas	244,		
Steam Ports in Locomotives	298		

For Buyers' Directory see pages xii., xiii., xiv.

Ixiii.

“The Mechanical Engineer”

Non-Magnetic Keyless Lever 30 Minute Chronograph.



This Chronograph has been designed to meet the wants of those having a reliable timekeeper but who do not wish to go to the expense of the Chronograph fitted with the ordinary timekeeping mechanism.

The Chronograph records up to 30 minutes in fifths of seconds, and being thoroughly Non-Magnetic will be found very convenient

FOR TESTING AND TIME-RECORDING PURPOSES.

PRICE **25/=** Post Free,
in Steel Oxidised Case.

FOWLER & CO.,

53, New Bailey St., MANCHESTER, England.

BRITISH AND METRIC EQUIVALENTS.*

Length.—

1 inch	=	2.54 centimetres.
1 foot	=	30.4799 centimetres.
1 yard	=	.914399 metre.
1 mile	=	1.6093 kilometres.
1 chain	=	20.1168 metres.
1 chain	=	66 ft. = 100 links.
1 mile	=	5280 ft. = 80 chains.
1 knot	=	6080 ft. per hour.
.39370113 inches	=	1 centimetre.
39.370113 inches	}	= 1 metre.
3.280843 feet		
1.0936143 yards	}	= 1 kilometre.
.62137 mile		
1 radian	=	57.296 degrees.

Area.—

1 sq. inch	=	6.4516 sq. centimetres
1 sq. foot	=	929.03 sq. centimetres.
	=	.092903 sq. metres.
1 sq. yard	=	.836126 sq. metres.
1 acre	=	.40468 hectare.
1 sq. mile	=	259 hectares.
.155 sq. inch	=	1 sq. centimetre.
10.7639 sq. feet	}	= 1 sq. metre.
1.196 sq. yards		
100 sq. metres	=	1 are.
10,000 sq. metres	}	= 1 hectare.
2.4711 acres		

Volume—

1 cu. inch	=	16.387 cu. centimetres.
1 cu. foot	=	.028317 cu. metres.
	=	28.317 litres.
1 cu. yard	=	.764553 cu. metres.
	=	764.553 litres.
1 gallon	=	4.545963 litres.
	=	.1605 cu. ft.
	=	277.37 cu. inches.
1 U.S.A. gallon	=	231 cu. inches.
	=	.83254 imperial gallon.

* The values of these equivalents are taken from the official report by the Board of Trade on weights and measures.

THE
PACKING

For STEAM ENGINES, that PACKS
With MINIMUM FRICTION
and MAXIMUM DURABILITY.

Used all over the World - Over **300,000** Supplied

ADOPTED BY -

BRITISH, UNITED STATES, DUTCH, | CUNARD, ORIENT, ROYAL MAIL, UNION
JAPANESE SPANISH, &C., NAVIES | CASTLE, &C. &C., STEAMSHIP LINES
PRINCIPAL RAILWAYS, INDUSTRIAL AND ELECTRICAL CONCERNS.

Highest Awards, Paris, 1900.

**UNITED STATES METALLIC
PACKING CO. LTD.,**
SOHO WORKS, Allerton Road, BRADFORD.

Telegrams -
'METALLIC, BRADFORD.'

Telephones -
Nos. 4705-4706.

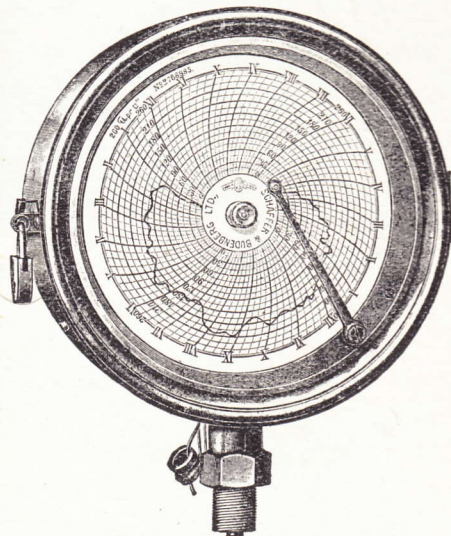
BRANCH OFFICES -

LONDON - - 116, Fenchurch St.	T.A. Zircons.	T.N. 2710 Avenue.
LIVERPOOL - 15, Fenwick St.	T.A. Undeniable	T.N. 1711 Central.
BOLTON - - 15, Mawdsley St.	T.A. Hello.	T.N. 406.
GLASGOW - - 52, St. Enoch Sq.	T.A. Floating	T.N. 8276 City.
SWANSEA - - Pembroke Buildings.	T.A. Metallic.	T.N. 919 Central.
NEWCASTLE-ON-TYNE - 2, Collingwood St.	T.A. Packing.	T.N. 2102 Central.

BIRMINGHAM, BELFAST, HULL, SHEFFIELD, NOTTINGHAM, BRISTOL,
FORTSMOUTH, PLYMOUTH. S. SHIELDS, EDINBURGH, &C.

Schäffer & Budenberg's
Recording Instruments, Self-
Recording Gauges, Thermometers,
Tachometers, Counters, etc.

Ask for Lists of Recording Instruments.



PRESSURE GAUGES for all purposes.

Manufacturers of every description of High Class
ENGINE AND BOILER FITTINGS.
BROADHEATH, Nr. MANCHESTER.

Branch Offices { 77a, Queen Victoria St., London, E.C.
5, Wellington Street, Glasgow.

with the compliments of

THE UNITED STATES METALLIC
PACKING CO., LIMITED,

SOHO WORKS,
BRADFORD,
ROAD,

ALLERTON